

Installation Products

Wall Base | Landing Tiles | Stair Treads | Weld Rods | Adhesives



Natralis™: 70013 Waikiki

All in the Details

Nothing completes a space like the little details. As your sole source provider, Armstrong Flooring offers all of the accessories you need to add the finishing touch to your project.

Coved & Sculptured Wall Base

- Easy installation around walls, corners, and columns thanks to a flexible formulation.
- Will not fade or crack.
- Resistant to scratch and scuff.



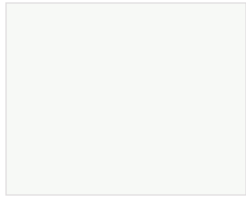
Integrated Stair Treads & Landing Tiles

- Provide a smooth, safe transition between steps and landings with integrated stair treads that are simple to install.
- Available in raised round or hammered profile.
- Stand up to heavy foot traffic with durable landing tiles that coordinate beautifully.

Weld Rods

- To align with FGI Guidelines for monolithic installation.
- Superior infection control with heat welded seams for spaces demanding enhanced sterilization.
- Coordinate across our commercial sheet collection.
- Add a contrasting weld rod for a pop of color.

Coved Wall Base



R41SL | R48SL Salt



R41CR | R48CR Carbon Beige

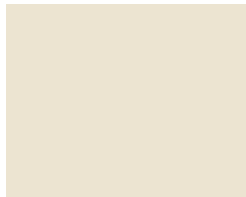


R41BH | R48BH Buffalo Hide



R41GM | R48GM Gray Mist

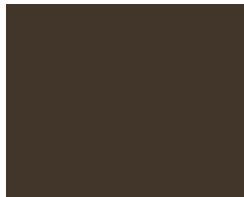
4 ft. Sticks - R41XX
Roll Cove - R48XX



R41PR | R48PR Parchment



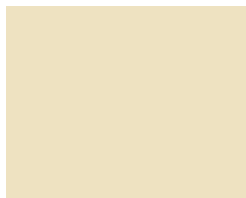
R41PB | R48PB Pebble



R41ML | R48ML Molasses



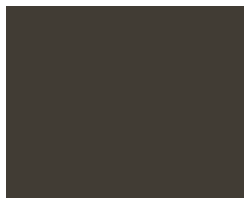
R41SW | R48SW Stonewash



R41CI | R48CI Classic Ivory



R41GR | R48GR Greige



R41WB | R48WB Warm Black



R41MG | R48MG Metal Gray



R41DS | R48DS Desert



R41FX | R48FX Flax



R41FS | R48FS Flagstone



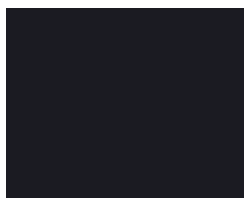
R41SG | R48SG Smokey Gray



R41ES | R48ES Essential Sand



R41TR | R48TR Turmeric



R41EB | R48EB Ebony



R41CG | R48CG Coastal Green



R41CM | R48CM Camel



R41SD | R48SD Saddle

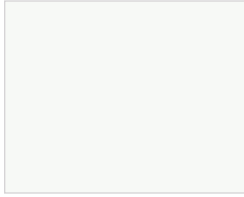


R41ND | R48ND Indigo



R41AN | R48AN Almost Navy

Sculptured Wall Base

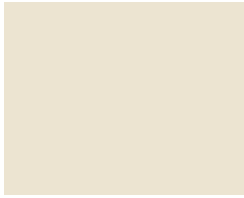


R53SL | R52SL Salt



R53CR | R52CR Carbon Beige

Profile 1 - R53XX
Profile 2 - R52XX



R53PR | R52PR Parchment



R53ML | R52ML Molasses



R53CI | R52CI Classic Ivory



R53SG | R52SG Smokey Gray



R53EB | R52EB Ebony



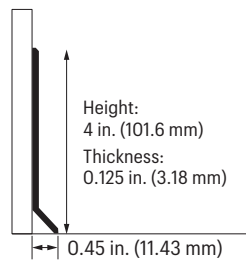
Profile 1



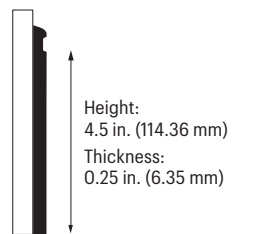
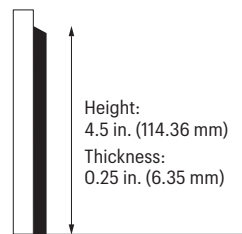
Profile 2

Wall Base Profiles

Coved Wall Base



Sculptured Wall Base



Coved & Sculptured Wall Base

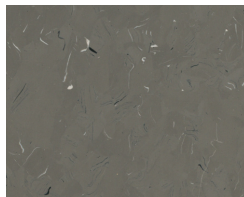
Products	Composition	Overall Thickness (nominal) (1)	Height	Feet per Carton	Pieces per Carton	Limited Commercial Warranty (2)	Adhesives
Coved - Sticks	Thermoplastic Rubber	0.125 in. (3.18 mm)	4.0 in. (101.6 mm)	120 lin. ft. (37 m)	30	5 Years	S-725 Wall Base Adhesive
Coved - Rolls		0.25 in. (6.35 mm)	4.5 in. (114.3 mm)	48 lin. ft. (14.63 m)	1		
Sculptured		0.25 in. (6.35 mm)	4.5 in. (114.3 mm)	48 lin. ft. (14.63 m)	6		

(1) Overall and wear layer thicknesses are nominal and subject to normal manufacturing variances.
(2) Visit ArmstrongFlooring.com for warranty details, limitations and exclusions.

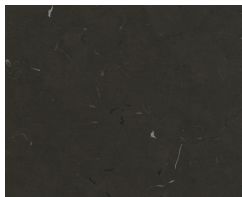
Landing Tiles



V8FES Essential Sand



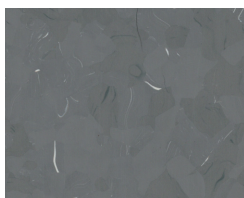
V8FPB Pebble



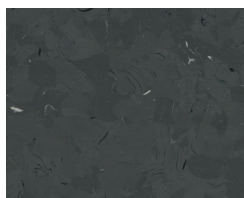
V8FML Molasses

12 in. x 12 in. Landing Tile - V8FXX

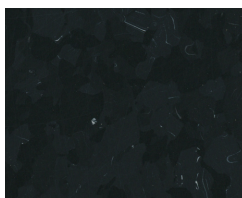
The smooth landing tile design coordinates well with Raised Round or Hammered stair tread styles.



V8FSW Stonewash



V8FSG Smokey Gray



V8FEB Ebony

Integrated Stair Treads & Landing Tiles

Products	Style	Overall Thickness (nominal) (1)	Size	Feet per Carton	Pieces per Carton	Limited Commercial Warranty (2)	Installation & Maintenance
Integrated Stair Treads	Raised Round	0.125 in. (3.18 mm)	20 in. x 50.25 in. (508 mm x 1276 mm)	25.125 lin. ft. (7.66 m)	6	5 Years	Adhesives: S-726, S-727 Cleaner: S-485
	Hammered		20 in. x 74.25 in. (508 mm x 1886 mm)	24.75 lin. ft. (7.54 m)	4		
			20 in. x 48.5 in. (508 mm x 1232 mm)	24.25 lin. ft. (7.39 m)	6		
			20 in. x 72.5 in. (508 mm x 1842 mm)	24.16 lin. ft. (7.36 m)	4		
Landing Tiles	-		12 in. x 12 in. (304.8 mm x 304.8 mm)	45 sq. ft. (4.18 m ²)	45	Adhesives: S-726 Cleaner: S-485 Polish: S-480	

(1) Overall and wear layer thicknesses are nominal and subject to normal manufacturing variances.
 (2) Visit ArmstrongFlooring.com for warranty details, limitations and exclusions.

Integrated Stair Treads



R4CES | R4HES | R6CES | R6HES
Essential Sand



R4CPB | R4HPB | R6CPB | R6HPB
Pebble



R4CML | R4HML | R6CML | R6HML
Molasses

4 ft. Stair Tread, Raised Round - R4CXX
 4 ft. Stair Tread, Hammered - R4HXX
 6 ft. Stair Tread, Raised Round - R6CXX
 6 ft. Stair Tread, Hammered - R6HXX



R4CSW | R4HSW | R6CSW | R6HSW
Stonewash

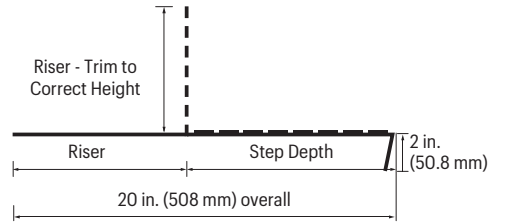


R4CSG | R4HSG | R6CSG | R6HSG
Smokey Gray



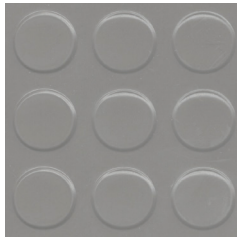
R4CEB | R4HEB | R6CEB | R6HEB
Ebony

Raised Round & Hammered
Stair Tread Profile



Integrated Stair Tread Style Options

Raised Round

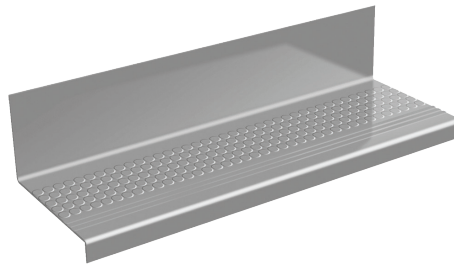


R4CSW | R6CSW
Stonewash

Hammered



R4HSW | R6HSW
Stonewash



Weld Rods

Homogeneous



Non-Aseptic Spaces: reduce installation materials and labor costs with the S-761 Seaming System. This creates a continuous look and is a great solution for designs with small intricate patterns.

Aseptic Spaces: heat weld seams with Weld Rods for spaces demanding superior infection control.

Weld Rods: help you achieve your design visuals by accenting or camouflaging seams.



Installation Products

LVT Adhesives

S-1000 Flooring Adhesive

- High moisture guarantee up to 100% RH
- Simple one-part system (modified urethane) for LVT
- Fast-curing formula with strong, early grab
- **Open time:** 10 minutes
- **Working time:** Up to 45 minutes
- **Spread rate:** 220-260 sq. ft./gal.
 - Trowel: 1/32 in. deep, 1/16 in. wide, 1/32 in. apart, U-Notch
- 100% RH
- 5-14 pH

High-Moisture



2 Gallon



VCT & BBT Adhesives

S-515 Adhesive—Clear Thin Spread

- High moisture guarantee
- Can also be used over cutback adhesive residue
- Dries clear to easily see chalk lines
- **Open time:** 30 minutes or until dry-to-touch
- **Working time:** 24 hours
- **Spread rate:** 285–335 sq. ft./gal. Trowel: fine notch
- 95% RH
- 5-11 pH
- 7 lbs. MVER

High-Moisture



1 Gallon
4 Gallon



S-319 Roll Strong™ Adhesive

- One coat, rolled on application
- Normal traffic and rolling loads are allowed on the floor immediately after installation
- Suitable for heavy rolling load traffic
- Solvent free
- **Open time:** Traffic the new floor immediately
- **Working time:** Up to 8 hours
- **Spread rate:** 300–400 sq. ft./gal.
- 99% RH
- 12 pH

Roller-Applied



1 Gallon
4 Gallon



LVT & Sheet Adhesive

S-995 Flooring Adhesive

- High moisture guarantee up to 95% RH
- Creates a strong, permanent bond
- 10-year underbed warranty
- **Open time:** LVT: Dry to touch, Sheet: 10-45 minutes
- **Working time:** 2 hours
- **Spread rate:** 220-260 sq. ft./gal.
- 95% RH
- 8-10 pH

High-Moisture



4 Gallon



Installation Products

Specialty Products

S-202 SDT Adhesive—For Static Dissipative Tile

- Supplied with copper grounding strips – Integral static dissipative element
- Excellent bond strength
- **Open time:** 60 minutes or until dry-to-touch
- **Working time:** 6 hours
- **Spread rate:** 150 sq. ft./gal. Trowel: fine notch
- 75% RH
- 3 lbs. MVER

SDT



1 Gallon
4 Gallon



S-761 Seam Adhesive for Sheet Floors

- Quick and easy seaming method for vinyl sheet and linoleum sheet
- Excellent seam integrity
- **Open time:** None
- **Working time:** 15 minutes
- **Spread rate:** 144 lin. ft./8 oz. bottle (with 1/8 in. bead)

Seams



8 oz. Bottle

S-725 Wall Base Adhesive

- No open time – immediate installation
- Easy clean up
- **Open time:** None
- **Working time:** 15 minutes
- **Spread rate:** 300–350 lin. ft./gal. (with 4 in. wall base)

Wall Base



30 oz. Tube
1 Gallon
4 Gallon



S-727 Stair Tread Epoxy Caulk

- For use with Integrated Stair Treads
- A two-part epoxy nose-caulking compound
- Prevents cracking and flexing of treads and nosings
- **Spread rate:** 50 lineal feet per unit at 1/4 in. diameter bead

Epoxy



12 Cartridges



S-726 Stair Tread & Landing Tile Adhesive

- For use with Integrated Stair Treads & Landing Tiles
- Recommended for heavy loads
- **Open time:** 5–10 minutes
- **Spread rate:** 125–150 sq. ft./gal.
- **Trowel:** 1/16 in. deep, 1/16 in. wide, 1/16 in. apart
- 85% RH
- 6 lbs. MVER

Epoxy



1 Gallon

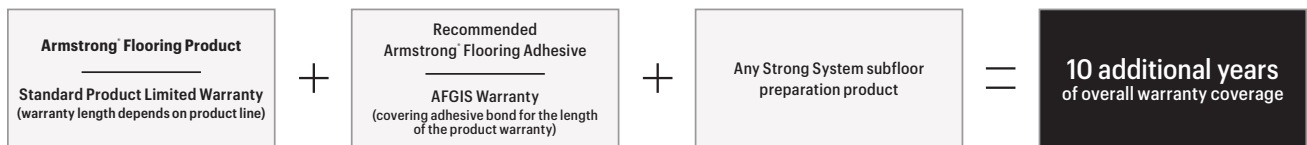


Installation Products

The Strong System is a collection of subfloor preparation products suitable for the rigorous demands of commercial installations.

- Extend your Armstrong Flooring Guaranteed Installation System warranty coverage and length by 10 years.
- Build your customized Strong System by selecting the preparation products that are right for your project.
- Save time and help ensure a successful installation by sourcing subfloor preparation products, adhesive, flooring, and maintenance supplies from a single source.

The Strong System Warranty



Floor Preparation

S-466 Patch Strong™

- High performance patching and smoothing compound with quick drying time
- A true featheredge finish
- Easy to apply with smooth trowel skim coat application
- No RH limit for use over concrete
- Suitable for use over S-462 Seal Strong after S-465 Prime Strong non-porous application
- No additive needed; easy to mix with water
- Zero VOC



10 lb. Bag



S-462 Seal Strong™

- A two-part moisture mitigation system designed to create a moisture barrier between concrete and resilient flooring
- Suitable for use up to 100% RH (or 25 lbs CaCl)
- Only one coat required to fully seal a concrete substrate
- Covers approximately 250 -270 sq. ft. per unit (at 10 mils)



Part A:
1.47 Gallon
Part B:
0.96 Gallon

S-464 Prime Strong™

- Acrylic primer for porous substrates
- Aids in strengthening adhesive bond
- Helps to reduce subfloor porosity and absorbency
- Approved for use with all Armstrong Flooring resilient adhesives
- Low VOC



2.6 Gallon



S-463 Level Strong™

- A self-leveling underlayment designed to work quickly
- High compressive strength of 5300 psi
- Unaffected by concrete moisture up to 99% RH
- Installs up to 1-1/2 in. thick on porous substrates and up to 1/2 in. thick on non-porous substrates
- Ready for foot traffic in 2-3 hours



55 lb. Bag

S-465 Prime Strong™

- Solvent-free, two-component primer for non-porous substrates
- Suitable for use over S-462 Seal Strong and other non-porous substrates
- Ready for installation in as little as 3 hours
- Approved for use with all Armstrong Flooring resilient adhesives
- Low VOC



1 Gallon



Installation Products

Floor Preparation

S-185 Latex Primer

- Improves adhesion of patches and adhesives
- Fast drying, ready for adhesive in 60 minutes
- Primer used with all Armstrong® patches, underlayments and latex based adhesives
- Can be used on all grade levels of concrete, poured in place gypsum underlayments, approved wood underlayments, ceramic tile, quarry tile, terrazzo and marble
- Primer for wood and concrete with self-adhering tile
- **Spread rate:** About 400 sq. ft./gal., brush or roller



1 Gallon
4 Gallon

S-1840 Quiet Comfort™ Luxury Flooring Underlayment

- Designed for use with Alterna® Engineered Tile, and LVT products
- Excellent acoustic barrier for through-the-floor and in-room footfall noise reduction
- Cross-linked polypropylene provides moisture barrier which resists mold and mildew
- Weight: 6 lbs./roll
- STC/IIC: 62/64



300 sq. ft. Roll

S-194 Patch, Underlayment & Embossing Leveler and S-195 Underlayment Additive

- Patch, skim coat and level ceramic tile, quarry tile, marble and terrazzo (except metal terrazzo strips) and concrete on any grade level
- Patch, skim coat, and level all grade levels of steel, stainless steel, brass and lead when mixed with S-195
- Cover existing asphalt cutback adhesive residue over concrete
- Patch and repair small voids, and skim coat wood underlayments; may be used for overall leveling of approved suspended wood underlayments when mixed with S-195
- Not recommended for use on strip wood floors
- Fill and level the embossing of single-layer existing resilient floor prior to the installation of new residential resilient floor when mixed with S-195
- Patches up to 1 in.; compressive strength >5000 psi



25 lb. Bag
1 Gallon

Floor Care: Cleaners Polishes & Sealers

Commercial Adhesive Summary

	RH Limit	pH Limit	Applicator	Unit Sizes	Spread Rate	Open Time	Working Time	Traffic Time			Shelf Life
								Low	Med	High	
Flip	95%	11	Spray adhesive	22 oz. Can	140-150 sq. ft. / Can	30 Min.	4 Hours	0	0	0	1 Year
S-202	75%	9	Fine U notch (S-891) 1/32 in. x 1/16 in. x 5/64 in.	Gal. / 4 Gal.	150 sq. ft. / gal.	60 Min.	6 Hours	-	-	-	1 Year
S-319	99%	12	Roll-on	Gal. / 4 Gal.	300-400 sq. ft. / gal.	15 Min.	4 Hours	0	0	0	1 Year
S-515	95%	11	Fine U notch (S-891) 1/32 in. x 1/16 in. x 5/64 in.	Gal. / 4 Gal.	285-335 sq. ft. / gal.	30 Min.	24 Hours	-	-	-	1 Year
S-1000	NTR	NTR	U-Notch 1/32 in. x 1/16 in. x 1/32 in.	2 gal. Pail	220-260 sq. ft. / gal.	10-20 Min.	45 Minutes	3h	4h	8h	1 Year
S-995	95%	10	U-Notch 1/32 in. x 1/16 in. x 1/32 in.	Gal. / 4 Gal.	220-260 sq. ft. / gal.	See TDS	2 Hours	24h	-	48h	2 Years
S-725	NA	NA	U-notch 1/16 in. x 1/16 in. x 3/32 in.	30 oz. / Gal./ 4 Gal.	300-350 lin. ft. / gal. (4 in. base)	0 Min.	15 Minutes	-	-	-	1 Year
S-726	85%	9	Square Notch 1/16 in. x 1/16 in. x 1/16 in.	Gal.	125-150 sq. ft. / gal.	5-10 Min.	45 Minutes	48h	-	72h	1 Year
S-727	NA	NA	Static Mixing Nozzle	13.5 oz. Cartridge	3/8 in. Bead x 25 lin. ft.	0-10 Min.	45 Minutes	24h	-	48h	1 Year
S-761	NA	NA	Applicator Bottle	8 oz. Bottle	1/8 in. Bead x 144 lin. ft.	0 Min.	15 Minutes	2h	-	-	1 Year

	LVT	VCT	Vinyl Sheet	SDT	Wall Base	Stair Tread	Landing Tiles
Flip							
S-202				✓			
S-319	✓						
S-515		✓					
S-1000	✓						
S-995	✓		✓				
S-725							
S-726						✓	✓
S-727							
S-761							

- ✓ Primary recommendation
- Compatible
- Not Compatible
- For use with certain products and/or applications. Refer to FloorExpert.com for details.

Moisture Testing

Moisture testing is an essential part of determining the suitability of a concrete slab to receive a resilient floor covering. Moisture testing must be performed on all concrete slabs, regardless of their age or grade level, including areas where resilient flooring has already been installed. Moisture testing should be conducted with the area or building at service conditions, (i.e., fully enclosed, weather-tight, and with the permanent or temporary HVAC in operation). In general, moisture testing should be conducted on concrete surfaces that exhibit the final prepared stage before the installation of the flooring material and before installation of smoothing or leveling compounds.

Armstrong Flooring recommends the following test methods:

a. Percent Relative Humidity (RH) in Concrete Slabs - Preferred Method

Testing for internal relative humidity of concrete slabs must be conducted in strict accordance with the current edition of ASTM F2170 Standard Test Method for Determining Relative Humidity in Concrete Floor Slabs Using in situ Probes.

b. Moisture Vapor Emission Rate (MVER) Test

MVER tests must be conducted in accordance with the current edition of ASTM F1869 Standard Test Method for Measuring Vapor Emission Rate of Concrete Subfloor Using Anhydrous Calcium Chloride. When performing these tests, it is important to remove any curing agents or residues down to the bare concrete. The calcium chloride tests are to be performed only on ordinary concrete floors and are not applicable on lightweight concrete, smoothing or leveling compounds, gypsum underlayments, or other fills.

ArmstrongFlooring™

Walk On. Walk Strong.™



Visit [ArmstrongFlooring.com](https://www.armstrongflooring.com)
for complete Product, Technical,
Adhesives, Installation and
Maintenance recommendations.

Print#:F-10441-823

Armstrong and the Armstrong logo are under license from AWI Licensing LLC. | All other trademarks are owned by AHF LLC. | © 2023 AHF LLC.